

HEATING/SANITARY RANGE



Pliers Wrenches

- replaces a set of spanners, metric and imperial
- also excellent for gripping, holding, pressing and bending workpieces
- smooth jaws for cautious installation of plated fittings
- Chrome vanadium electric steel, forged, oil-hardened



Article No.	EAN 4003773-	Adjustment Positions	mm	Inch	mm
86 03 150	069676	14	27	1"	150
86 03 180	035466	13	35	1 3/8"	180
86 03 250	033837	17	46	1 3/4"	250
86 03 300	041429	22	60	2 3/8"	300
86 05 150	069928	14	27	1"	150
86 05 180	047162	13	35	1 3/8"	180
86 05 250	047841	17	46	1 3/4"	250

KNIPEX Cobra® Hightech Water Pump Pliers

- adjustment at the touch of a button directly on the workpiece
- fine adjustment for optimum adaptation to different sizes of workpieces and a comfortable handle width
- self-locking on pipes and nuts: no slipping on the workpiece and low handforce required
- box-joint design: high stability because of double guide
- reliable catching of the hinge bolt: no unintentional shifting
- guard prevents operators' fingers being pinched
- Chrome vanadium electric steel, forged, oil-hardened

Art. 87 01 560



Art. 87 01 400



Art. 87 01 300



Art. 87 01 250



Art. 87 01 180



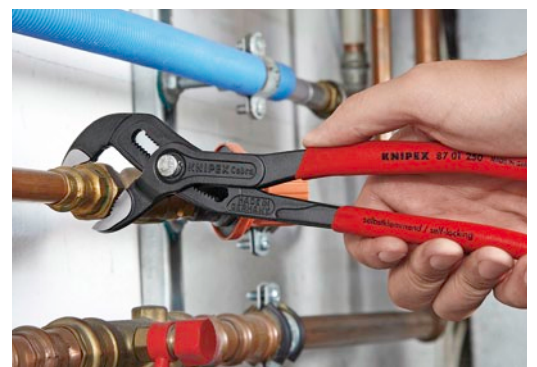
Art. 87 01 150



Art. 87 01 125



Article No.	EAN 4003773-	Adjustment Positions	Ø Inch	mm	mm
87 01 125	069935	13	1	27	125
87 01 150	060116	11	1 1/4	30	150
87 01 180	022015	18	1 1/2	36	180
87 01 250	022022	25	2	46	250
87 01 300	034087	30	2 3/4	60	300
87 01 400	005636	27	3 1/2	95	400
87 01 560	044321	20	4 1/2	120	560



KNIPEX Minis in belt pouch 2 parts

- KNIPEX Minis as "little helpers" in the practical belt pouch
- made of hard-wearing polyester fabric
- with hook and loop fastener
- with elastic side holder for small flash lamp, pen or suchlike
- with practical belt loop



Article No.	EAN 4003773-	Content
00 20 72 V01	070832	86 03 150 KNIPEX Pliers Wrench 87 01 125 KNIPEX Cobra® Water Pump Plier



Fine adjustment by pushing a button: fast and comfortable.

Bestseller-Set

KNIPEX Pliers Set

- pliers with polished heads; handles with non-slip plastic coating or with two-colour multi-component grips



Article No.	EAN 4003773-	Content
00 20 09 V01	073994	03 02 180 KNIPEX Combination Pliers 70 02 160 KNIPEX Diagonal Cutter 87 01 250 KNIPEX Cobra® Water Pump Plier



Teeth set against the direction of rotation have a self-locking effect and prevent slipping on the workpiece.



KNIPEX Cobra® ES Water Pump Pliers extra-slim

- particularly good access to the workpiece due to very slim construction of head and joint area
- ideal for service and maintenance, equipment repair, automotive and general industry
- long, narrow jaws



PATENTED

Article No.	EAN 4003773-	Adjustment Positions	Inch	mm	mm
87 51 250	061267	19	1 1/4"	34	250

KNIPEX SmartGrip®



- ideal for frequent changeovers to workpieces of different sizes
- automatic adjustment per one-hand operation both for right-handed and left-handed use
- good access to the workpiece thanks to the slim dimensions in the head and joint area and flush joint bolt
- box-joint design: high stability because of double guide
- locking lever for space saving transport with reliable closed handles
- Chrome vanadium electric steel, forged, oil-hardened



PATENTED

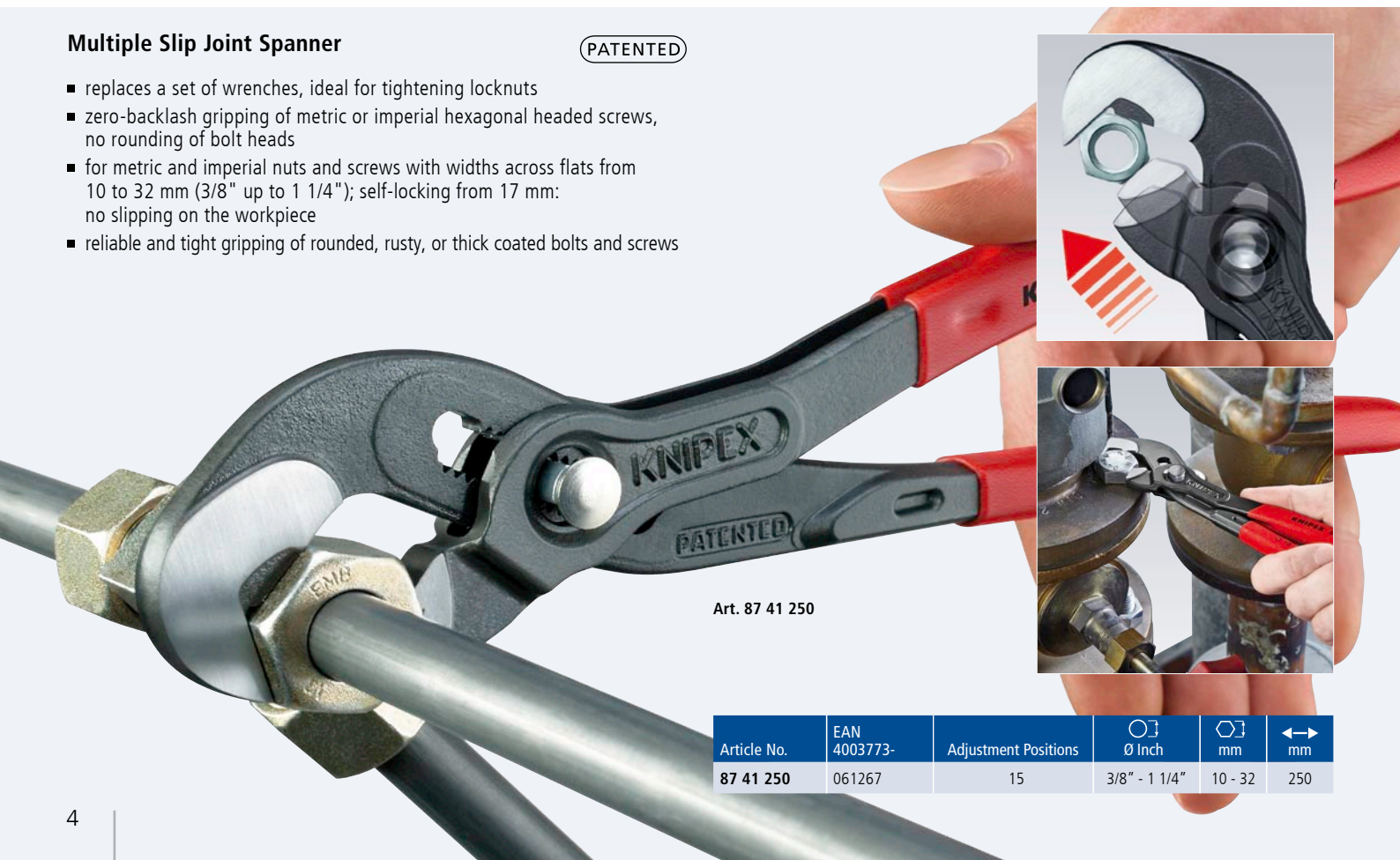


Article No.	EAN	Ø Inch	Ø mm	mm	mm
85 01 250	4003773-061304	1 1/4	32	36	250

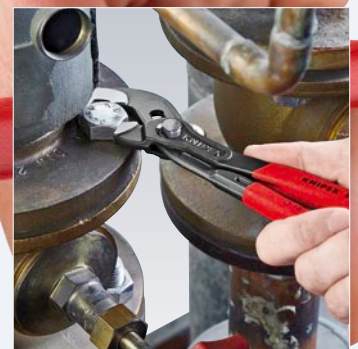
Multiple Slip Joint Spanner

PATENTED

- replaces a set of wrenches, ideal for tightening locknuts
- zero-backlash gripping of metric or imperial hexagonal headed screws, no rounding of bolt heads
- for metric and imperial nuts and screws with widths across flats from 10 to 32 mm (3/8" up to 1 1/4"); self-locking from 17 mm: no slipping on the workpiece
- reliable and tight gripping of rounded, rusty, or thick coated bolts and screws



Art. 87 41 250



Article No.	EAN	Adjustment Positions	Ø Inch	mm	mm
87 41 250	4003773-061267	15	3/8" - 1 1/4"	10 - 32	250

KNIPEX Alligator® Water Pump Pliers

- more output and comfort compared to conventional water pump pliers of the same length: 9-notch adjustment positioning for 30 % more gripping capacity
- self-locking on pipes and nuts: no slipping on the workpiece and low handforce required
- gripping surfaces with special hardened teeth, teeth hardness approx. 61 HRC: low wear and stable gripping
- box-joint design: high stability because of double guide
- robust construction, insensitive to dirt; particularly suitable for outdoor work



Alligator®



Article No.	EAN 4003773-	Adjustment Positions	∅ Inch	∅ mm	mm	mm
88 01 180	035480	9	1 1/2	42	30	180
88 01 250	022992	9	2	50	46	250
88 01 300	034094	9	2 3/4	70	60	300

Pipe Wrenches 90°

- 90° angled jaws
- jaws with offset teeth in opposite direction
- teeth additionally induction hardened
- I-beam handle design
- captive adjusting nut

Article No.	EAN 4003773-	∅ mm	∅ Inch	∅ Inch	mm
83 10 010	014188	42	1 5/8"	1"	310
83 10 015	014195	60	2 3/8"	1 1/2"	420
83 10 020	014201	70	2 3/4"	2"	560



Art. 83 10 015

Pipe Wrenches S-Type

- slim, S-type jaw
- jaws with offset teeth in opposite direction
- three-point contact on pipes, self-locking

Article No.	EAN 4003773-	∅ mm	∅ Inch	∅ Inch	mm
83 30 010	014249	42	1 5/8"	1"	310
83 30 015	014256	60	2 3/8"	1 1/2"	420
83 30 020	014263	70	2 3/4"	2"	540



Art. 83 30 015

Pipe Wrench S-Type with rapid adjustment

- time-saving, precise adjustment of the gripping width directly on the workpiece at the push of a button
- less effort required due to self-locking action

Article No.	EAN 4003773-	∅ mm	∅ Inch	∅ Inch	mm
83 60 010	075424	42	1 5/8"	1"	330
83 60 015	075677	60	2 3/8"	1 1/2"	420



Art. 83 60 010

Snipe Nose Side Cutting Pliers

- distortion-tolerant, elastic precision tips
- half-round, long, pointed jaws
- with cutting edges (hardness approx. 61 HRC) for soft, medium-hard and hard wire
- Vanadium electric steel; forged, oil-hardened



Art. 25 02 160



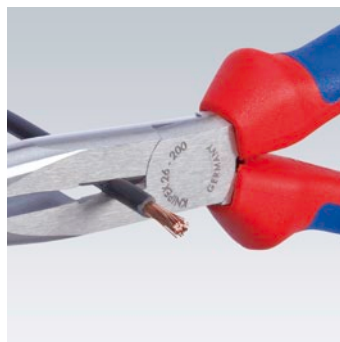
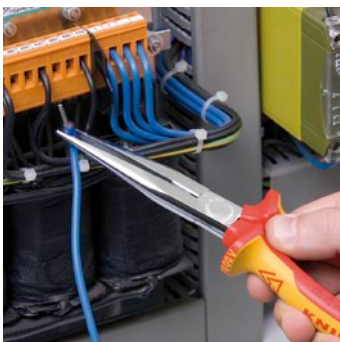
Art. 26 22 200



Art. 26 16 200



Art. 26 26 200



Article No.	EAN 4003773-	Description	↔ mm
25 02 160	023166	head polished, handles with multi-component grips	160
26 12 200	023142	head 40° angled; head polished, handles with multi-component grips	200
26 16 200	022831	pliers chrome plated; handles insulated with multi-component grips, VDE-tested	200
26 22 200	023135	head 40° angled; head polished, handles with multi-component grips	200
26 26 200	022855	head 40° angled; pliers chrome plated; handles insulated with multi-component grips, VDE-tested	200

Pipe Gripping Pliers for tube fittings and connectors

- ideal for tightening and releasing pipe fittings, round union nuts, etc. from 25 up to 65 mm dia.
- with knurled gripping jaws
- 4-position adjustable slip joint

Art. 81 13 230

- with plastic jaws for careful installation up to 60 mm dia.



81 13 230



Art. 81 13 230



Art. 81 03 230

Article No.	EAN 4003773-	Ø mm	↔ mm
81 03 230	018957	25 - 65	230
81 13 230	050117	25 - 60	230



Combination Pliers

- with gripping zones for flat and round material, suitable for versatile use
- with cutting edges for soft and hard wire
- long cutting edges for thicker cables
- cutting edges additionally induction hardened, cutting edge hardness approx. 60 HRC
- Special tool steel, forged, oil-hardened



Art. 03 02 180



Art. 03 06 180



Article No.	EAN 4003773-	Ø mm	Ø mm	Ø mm	mm ²	↔ mm
03 02 180	023197	3.4	2.2	12	16	180
03 06 160	021902	3.1	2.0	10	16	160
03 06 180	021926	3.4	2.2	12	16	180
03 06 200	033776	3.8	2.5	13	16	200



Art. 02 01 180



Art. 02 02 180

Article No.	EAN 4003773-	Ø mm	Ø mm	Ø mm	mm ²	↔ mm
02 01 180	033134	2.5	2.0	11.5	16.0	180
02 01 200	039679	2.8	2.2	13.0	25.0	200
02 02 180	034896	2.5	2.0	11.5	16.0	180

High Leverage Combination Pliers

- easier work due to optimised leverage
- with cutting edges (hardness approx. 63 HRC) for soft and hard wire and piano wire
- long cutting edges for thicker cables
- with gripping zones for flat and round material, suitable for versatile use
- High-grade special tool steel, forged, oil-hardened



Diagonal Cutters

- the essential cutting tool for versatile use
- high quality material and precise workmanship for long service life
- clean cutting of thin copper wires, also at the cutting-edge tips

Article No.	EAN 4003773-	Cutting Capacity			
		● Ø mm	● Ø mm	○ Ø mm	↔ mm
70 02 160	034032	3.8	2.7	2.2	180
70 06 160	021995	3.8	2.7	2.2	180
74 06 180	033813	3.8	2.7	2.2	180



Art. 70 02 160

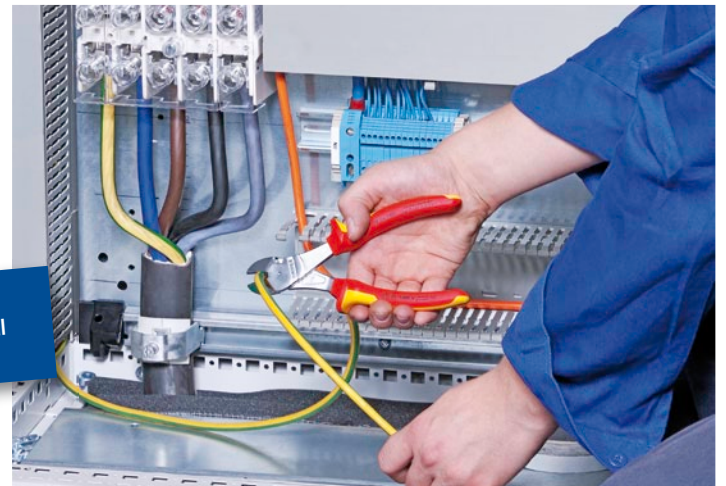


Art. 70 06 160

High Leverage Diagonal Cutters

- for very tough, continuous use
- high cutting performance with minimum effort due to optimum coordination of the cutting edge angle, transmission ratio and ergonomic handle shape
- precision cutting edges additionally induction hardened (cutting edge hardness approx. 64 HRC), for all sorts of wire including piano wire

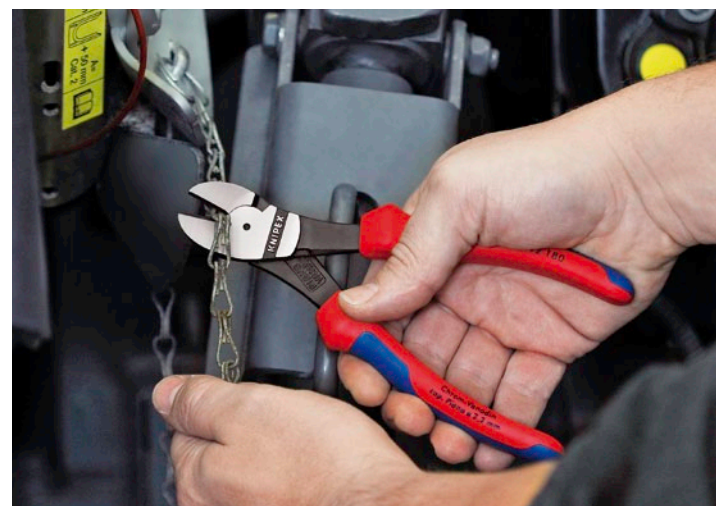
20 % less effort required compared to conventional diagonal cutters of the same length.



Art. 74 02 180



Art. 74 06 200



Article No.	EAN 4003773-	Cutting Capacity			
		● Ø mm	● Ø mm	○ Ø mm	↔ mm
74 02 160	023081	3.4	2.5	2	160
74 02 180	023074	3.8	2.7	2.2	180
74 02 200	040309	4.2	3.0	2.5	200
74 02 250	042402	4.6	3.5	3	250
74 06 160	040705	3.4	2.5	2	160
74 06 180	022985	3.8	2.7	2.2	180
74 06 200	033820	4.2	3.0	2.5	200
74 06 250	018421	4.6	3.5	3	250



X-Cut® Compact Diagonal Cutters

Compact and light. Powerful and precise. Cuts finest strands as well as multi-core cables and piano wires.

- box-joint design: highest stability with low weight
- doubly supported joint axis for heaviest duty
- high cutting capacity with very little effort thanks to the optimum coordination of cutting-edge angle and leverage ratio with laterally staggered pivot point
- large opening width for thicker cables

40 % less effort
required compared to diagonal cutters
of the same length

- cuts precisely, even through fine copper wires
- compact, low-weight construction
- universally usable, in the assembly, maintenance and production
- Chrome vanadium heavy-duty steel, forged, oil-hardened



INNOVATION



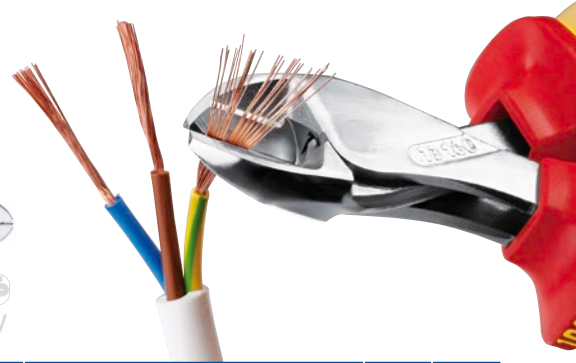
Art. 73 02 160



Art. 73 05 160



Art. 73 06 160



Article No.	EAN 4003773-	Icons	Pliers	Head	Handles	Cutting capacities					g	mm
						Ø mm	Ø mm	Ø mm	Ø mm	Ø mm		
73 02 160	075127	✓	black atramentized	polished	with multi-component grips	4,8	3,8	2,7	2,2	12	175	160
73 05 160	075134	✓	chrome plated		with multi-component grips	4,8	3,8	2,7	2,2	12	175	160
73 06 160	075141	⚡ 1000V	chrome plated		insulated with multi-component grips, VDE-tested	4,8	3,8	2,7	2,2	12	195	160

KNIPEX TwinForce®

High Performance Diagonal Cutter

- ideal transmission of force due to double-hinged design
- reliably cuts all types of wire, including steel tape
- for rough or very fine cutting
- low cutting impact: gentle on hands.
The tension on muscles and tendons is relieved
- for comfortable cutting, repetitive cutting or extremely hard cutting jobs
- high degree of stability and zero-backlash due to precisely milled forged-in axles
- Chrome vanadium heavy-duty steel, forged, oil-hardened

INNOVATION

Extremely easy cutting with little strain:
cuts again **50 % easier** than
the tried and tested KNIPEX
high leverage diagonal cutters.

PATENTED



Article No.	EAN 4003773-	Icons	Pliers	Head	Handles	Cutting capacities				g	mm
						Ø mm	Ø mm	Ø mm	Ø mm		
73 71 180	074762	✓	black atramentized	polished	plastic coated	5.5	4.6	3.2	3.0	255	180
73 72 180	074779	✓	black atramentized	polished	with multi-component grips	5.5	4.6	3.2	3.0	280	180

KNIPEX CoBolt® Compact Bolt Cutters

- precision cutting edges for soft and hard wire and piano wire
- cuts components like bolts, nails, rivets, etc. up to 5.2 mm dia.
- exceptional cutting performance with minimum effort because of unsurpassedly effective lever action design
- cutting edges additionally induction hardened, cutting edge hardness approx. 64 HRC
- Chrome vanadium heavy-duty steel, forged, oil-hardened

Art.: 71 12 200

opening spring and locking device are integrated in the handles also for comfortable work and secure transport

Art.: 71 22 200

20° angled head with single-sided joint bar and diagonal cutting edge for flush cutting; with space for gripping; opening spring and locking device are integrated in the handles also for comfortable work and secure transport

Art.: 71 32 200

the recess in the blade allows easier cutting of thicker wires, e. g. for anchor bolts in false ceilings; opening spring and locking device are integrated in the handles also for comfortable work and secure transport

Art.: 71 41 200

the recess in the blade allows easier cutting of thicker wires, e. g. for anchor bolts in false ceilings; 20° angled head with single-sided joint bar and diagonal cutting edge for flush cutting; with space for gripping



Art. 71 12 200

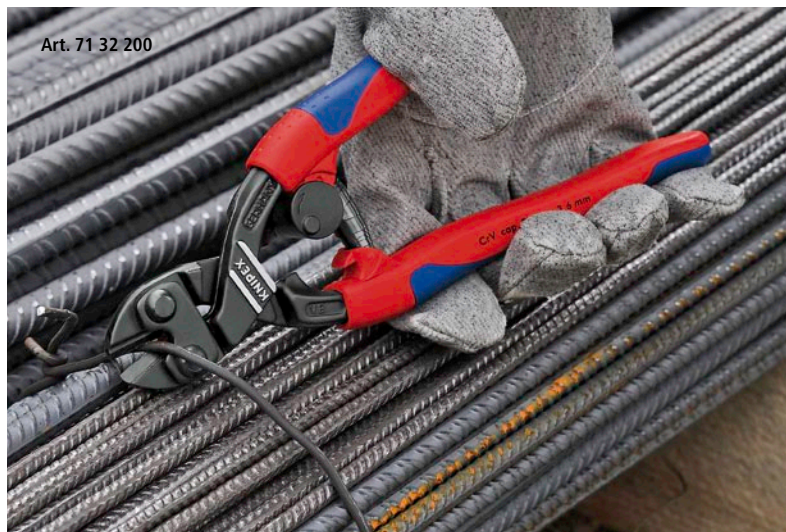
Article No.	EAN 4003773-	⊙ mm	◐ mm	◑ mm	○ mm	↔ mm
71 01 200	033165	6.0	5.2	4.0	3.6	200
71 12 200	066859	6.0	5.2	4.0	3.6	200
71 22 200	066873	6.0	5.2	4.0	3.6	200
71 32 200	066880	6.0	5.2	4.0	3.6	200
71 41 200	066897	6.0	5.2	4.0	3.6	200



Art. 71 32 200



Art. 71 22 200



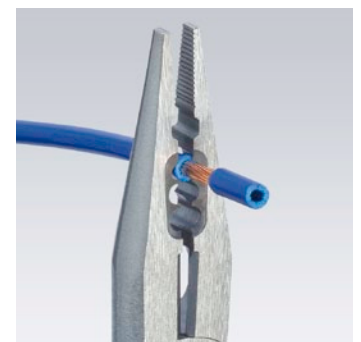
Art. 71 32 200

Electricians' Pliers

- the ideal pliers for cable work
- for gripping and bending wire
- for cutting soft, medium and hard wire
- precision cutting edges additionally induction hardened, cutting edge hardness approx. 60 HRC
- with precision stripping holes
- for crimping end sleeves (ferrules) 0,5 - 2,5 mm²
- Vanadium electric steel; forged, oil-hardened



Article No.	EAN 4003773-	Description	Stripping capacities mm ²	↔ mm
13 02 160	052326	head polished, handles with multi-component grips	0.5 - 0.75 / 1.5 / 2.5	160

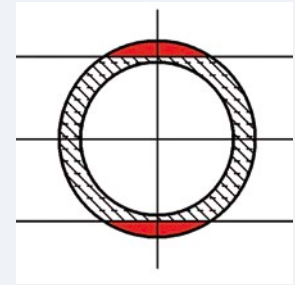


Self-Adjusting Insulation Stripper

- for single, multiple and fine stranded conductors with plastic or rubber insulation
- cutting depth can be adjusted for different insulation materials
- stripping blades and clamping jaws easily replaceable



Article No.	EAN 4003773-	Stripping capacities mm ²	AWG	Length stop mm	↔ mm
12 40 200	026662	0.03 - 10.0	35	3.0 - 18.0	200



Mode of operation of straight cutters

An incision is made in the red area only.

Not suitable for highly-flexible or armoured insulation materials or for multi-layered insulation.

KNIPEX MultiStrip 10 Automatic Insulation Stripper

PATENTED

- fully automatic adjustment to commercially used single-, multi- and fine-stranded conductors with standard insulation throughout the entire capacity range from 0.03 to 10.0 mm²
- with wire cutter for copper and aluminium conductors, multi-stranded up to 10 mm² and single-stranded up to 6 mm²
- replaceable blades block and length stop

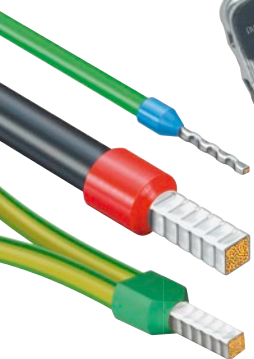
Article No.	EAN 4003773-	∅ mm	mm ²	↔ mm
12 42 195	054580	0.03 - 10.0	32 - 7	195



Self-Adjusting Crimping Pliers for end sleeves (ferrules) with front loading

PATENTED

- for crimping end sleeves (ferrules) according to DIN 46228 parts 1 + 4
- self-adjusting adaptation to the desired end sleeve (ferrule) size: no wrong crimps caused by using the wrong die
- crimping from 0.08 - 10.0 and 16.0 mm² in one profile
- with selector lever for setting the crimping area either to 0.08 - 10 mm² or 16 mm²



Article No.	EAN 4003773-	Description	Capacity mm ²	↔ mm
97 53 09	044550	pliers burnished; handles with multi-component grips	0,08 - 10 + 16	190

Crimping Pliers for end sleeves (ferrules)

- for crimping end sleeves (ferrules) according to DIN 46228 parts 1 + 4 from 0.25 to 16 mm²
- crimping in marked half-round dies for reliable connections between the sleeve and the conductor
- 9 particularly deep dies with conical side faces



Article No.	EAN 4003773-	Capacity mm ²	AWG	Number of crimping positions	↔ mm
97 71 180	040668	0.25 - 16.0	23 - 5	9	180

Universal Dismantling Tools

- for dismantling and stripping all common round and damp-proof installation cables between 8.0 - 13.0 mm dia. (e.g. 3 x 1.5 mm² up to 5 x 2.5 mm²)
- also for use in conduit and distribution boxes
- with additional blade for longitudinal cuts



Article No.	EAN 4003773-	∅ mm	Types of cables	↔ mm
16 85 125 SB	060444	8.0 - 13.0	round cable, e.g.: 3 x 1.5 mm ² up to 5 x 2.5 mm ²	125

Pipe Cutter for plastic conduit pipes (electrical installation work)

- for clean cutting of plastic pipes (e.g. plastic conduit pipes) with 6 - 35 mm dia.
- not suitable for cutting cables
- blade is replaceable and can be retracted from any position
- low force requirement due to special blade geometry and optimum transmission
- minimum operator fatigue due to ergonomic handle design and incremental ratchet blade feed



Article No.	EAN 4003773-	Cutting Capacity Ø mm	Cutting edge length mm	↔ mm
94 10 185	047025	6 - 35	35	185



Pipe Cutter for flexible pipes and protective tubes

- for cutting thin walled plastic pipes (conduit plastic pipes) and flexible hoses, also with fabric reinforcement, of plastic and rubber up to 25 mm dia. / 1" exterior dia.
- not suitable for cutting cables
- with opening spring and locking device

Article No.	EAN 4003773-	Cutting Capacity Ø mm	↔ mm
90 20 185	067122	25	185



Pipe Cutter for composite pipes and protective tubes

- for cutting composite pipes with diameters from 12.0 to 20.0 mm and for cutting flexible protective tubes with a diameter of 18.0 - 35.0 mm without damaging a potentially pipe inside
- a calibration arbor can be fitted, for example for Geberit composite pipes with 11.5 and 15.0 mm dia.



PATENTED

Article No.	EAN 4003773-	Cutting Capacity Ø mm	↔ mm
90 25 20	046004	18 - 35	210

Pipe Cutter for composite and plastic pipes

- for cutting thick walled plastic and composite pipes with diameters from 26.0 to 40.0 mm
- cuts pipes according to the ratchet principle in several strokes
- self-adapting pipe support positions pipes of various diameters correctly for a rectangular cut



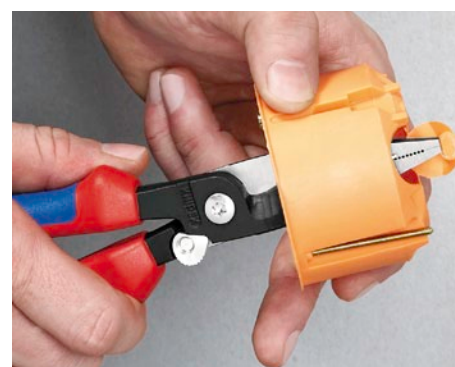
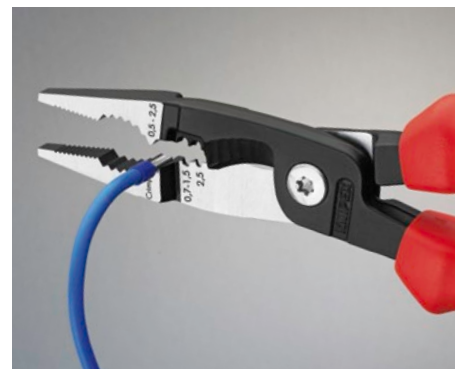
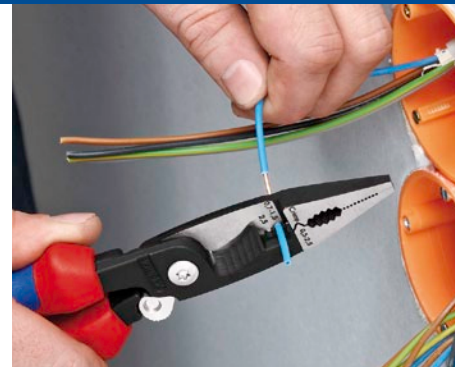
PATENTED

Article No.	EAN 4003773-	Cutting Capacity Ø mm	↔ mm
90 25 40	045182	26 - 40	210

Pliers for Electrical Installation

The all-rounder for professionals.

- multifunctional pliers for the electrical installation; to grip flat and round material, for bending, deburring, cutting cable, stripping and crimping end sleeves (ferrules)
- 6 functions in one pair of pliers
- smooth surfaces near the tips grip single cores without damaging them; serrated gripping surfaces and pipe grip for gripping flat and round material
- clear-cut outside edge on the jaw for working on flush-mounted junction boxes and deburring feed-through holes
- stripping holes for conductors of 0.7 - 1.5 mm² and 2.5 mm²
- crimp die for wire-end ferrules 0.5 - 2.5 mm²
- cable shears with (induction-hardened) precision cutting edges for copper and aluminium cables up to 5 x 2.5 mm² / dia. 15 mm
- gripping, without opening the pliers completely (intelligent latching mechanism in the spring assisted version). The cutting edge remains closed and protected
- slim dimensions for easy access
- bolted joint: precise, zero backlash operation of pliers
- High-grade special tool steel, forged, oil-hardened



Art. 13 81 200



Art. 13 91 200



Art. 13 82 200



Art. 13 92 200



Art. 13 86 200



Art. 13 96 200

INNOVATION

Article No.	EAN 4003773-	Pliers	Head	Handles	Cutting capacities			
					Ø mm	mm ²	g	mm
13 81 200	075240	black atramentized	polished	plastic coated	15	50	265	200
13 82 200	075080	black atramentized	polished	with multi-component grips	15	50	280	200
13 86 200	075097	chrome plated		insulated with multi-component grips, VDE-tested	15	50	280	200
13 91 200	075257	black atramentized	polished	plastic coated	15	50	265	200
13 92 200	075103	black atramentized	polished	with multi-component grips	15	50	280	200
13 96 200	075110	chrome plated		insulated with multi-component grips, VDE-tested	15	50	280	200

Combination Shear

- for cutting cardboard, plastics, aluminium, brass and copper foils
- precision ground, hardened blades
- with opening spring and locking device
- not suitable for steel wire or iron sheets
- shears body: surgical steel, stainless, vacuum-hardened



Article No.	EAN 4003773-	↔ mm
95 05 190	019602	190



Cable Shears

- clean and smooth cut without crushing and deformation
- for cutting copper and aluminium single conductors as well as multiple stranded cables
- not suitable for steel wire and hard drawn copper conductors
- High-grade special tool steel, forged, oil-hardened

Article No.	EAN 4003773-	Description	⊕ mm	⊕ mm ²	↔ mm
95 12 165	029182	tool burnished; handles with multi-component grips	15	50	165
95 16 165	039648	tool chrome plated; handles insulated with multi-component grips, VDE-tested	15	50	165



Concretors' Nipper

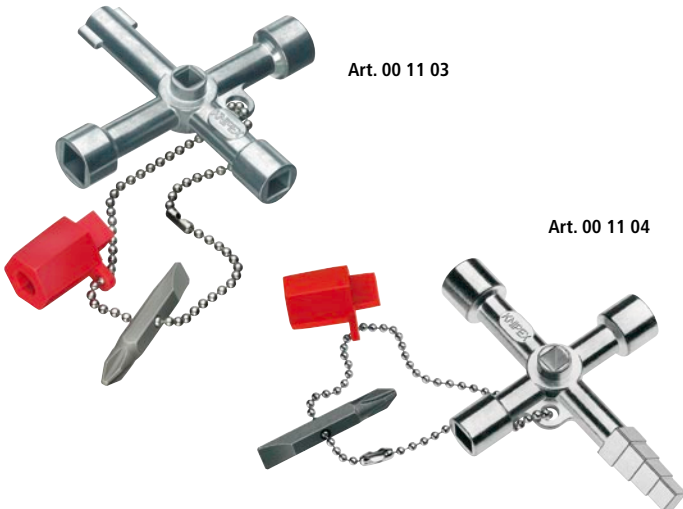
- to twist and cut wire in one operation: fast, reliable and economical
- unobtainable precision and long service life make these the most widely purchased concretors' nippers in the world
- High-grade special tool steel, forged, oil-hardened



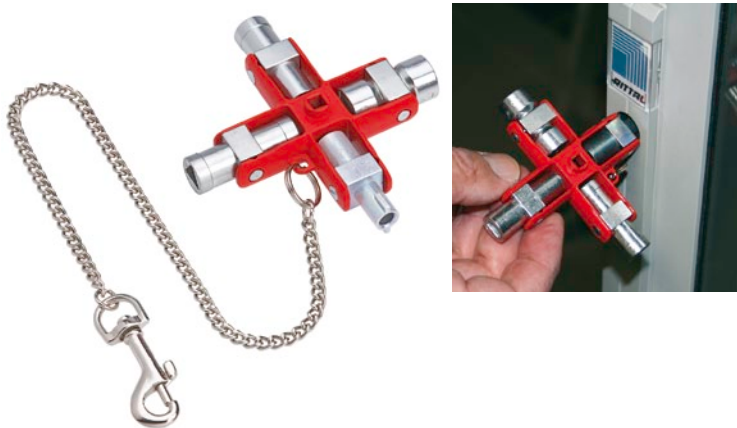
Article No.	EAN 4003773-	Description	⊙ mm	⊙ mm	↔ mm
99 00 250	013280	pliers black atramentized; head polished	2.4	1.6	250

Control Cabinet Keys

- for control cabinets and shut-off systems in the supply of gas, water and electricity
- for technical installations in buildings, e.g. air conditioning and ventilation systems, shut-off valves
- with bit insert: slot 1.0 x 7 mm and cross recess PH 2



Article No.	EAN 4003773-	mm	mm	mm	mm	mm
00 11 03	041658	5 / 6 / 8	9	3 - 5	-	76
00 11 04	048954	5 / 7 / 8	9 - 10	-	6 / 7 / 8 / 9	90



Universal Key for all standard cabinets and shut-off systems

- for locking systems in electrical engineering, the supply of gas and water, air conditioning and ventilation systems, industry, technical installations in buildings, etc.
- 9 different die-cast zinc key-profiles in 1 tool
- with detachable chain and snap hook
- total length: 90 mm

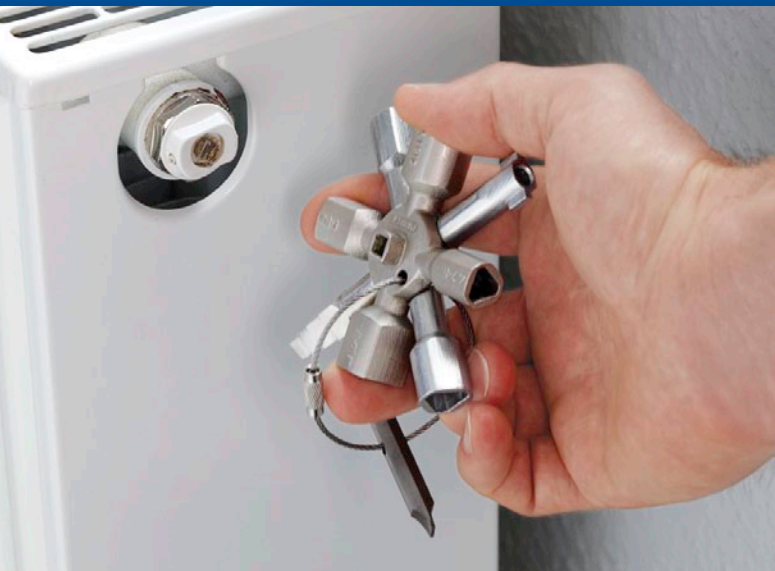
Article No.	EAN 4003773-	mm	mm	mm	mm	mm
00 11 06	071334	5 / 6 / 7 - 8 / 9 - 10	7 / 8 - 9 / 10 - 11	3 - 5	6	90



Pen-Style Control Cabinet Keys for all standard cabinets and shut-off systems

- easy to carry pen-style control cabinet key with fastening clip
- four different key profiles can be utilised by swivelling the key holder
- universal 1/4" bit adapter for standard bits (permanent magnet for retaining)
- additional bit adapter for 1/4" bits inside one key profile
- with inserted bit: cross recess PH 2 and possibility of safekeeping a second bit

Article No.	EAN 4003773-	mm	mm	mm	mm	mm	mm
00 11 07	063018	5 / 8	5 / 6 / 8	9	3 - 5	-	145
00 11 08	063025	5 / 8	-	9	-	6 / 7 / 8 / 9	145



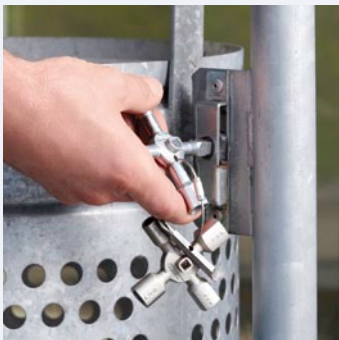
KNIPEX TwinKey®

10 profiles. 2 crosses. 1 wrench.

For all established locking systems

- multifunctional wrench for the actuation of locking systems from the areas of facilities engineering (heating and sanitation, air-conditioning, electrotechnology), gas and water supply and shut-off systems
- 8-arm version: two 4-way wheel wrenches connected in a space-saving way using magnets
- reversible bit: slot 1.0 x 7 mm and PH 2 cross slot
- wrench and reversible bit joined by stable stainless steel wire
- weight-optimised zinc die-cast design

INNOVATION



Article-No.	EAN 4003773-	Ø mm	Capacities				
			Ø mm	Ø mm	Ø mm	mm	mm
00 11 01	074670	5/6 - 7/8 - 9/10 - 11	7 - 8/9 - 10/11 - 12	3 - 5	6	6 - 9	95

KNIPEX-Werk

C. Gustav Putsch KG

Oberkamper Straße 13
42349 Wuppertal
Germany

Tel.: +49 (0) 202 – 47 94-0
Fax: +49 (0) 202 – 47 74 94

info@knipex.de
www.knipex.de

Your distributor